

CINET

Professional Textile Care

BUILDING A GLOBAL NETWORK

CINET Innovations & New Technologies EXPO DETERGO 2018



www.cinet-online.com

Table of contents

1 Introduction	3
2 WOPCOM	3
3 Innovations in Retail Textile Cleaning	5
3.1 New cleaning techniques	5
3.1.1 SafeChem	5
3.1.2 Salad: Purely Natural and a fantastic result!	5
3.1.3 Results Solvetex VI, benchmark professional wetcleaning	5
3.2 New machines and systems	7
3.2.1 Böwe	7
3.2.2 Electrolux	7
3.2.3 LG	7
3.2.4 Yamamoto	8
3.2.5 Metalprogetti	8
3.3 Finishing equipment	8
3.3.1 VEIT	8
3.3.2 Sankosha	9
3.3.3 Pony	9
4 Innovations in Industrial Textile Service	10
4.1 New machines for Textile Service	10
4.1.1 Kannegiesser	10
4.1.2 Milnor	10
4.1.3 Girbau	10
4.1.4 Vega / Fintec	11
4.1.5 Lapauw	11
4.1.6 Lavatec	12
4.1.7 Tolkar	12
4.2 New cleaning techniques	12
4.2.1 Christeyns	12
4.2.2 Ecolab	13
4.3 Automation	13
4.3.1 Laundry Robotics	13
4.3.2 Inwatec	14
4.3.3 WSP	14
4.4 RFID	15
4.4.1 Datamars	15
4.4.2 Thermotex	15
4.4.3 USTEK	15

1 Introduction

Milan, October 19 - 22; The expectations were high and were also realized. Prominent innovations in robot technology and automation were shown for the first time for a broad professional audience at this International fair. The most eye-catching innovation came from the Netherlands. The newly established Laundry Robotics company presented robin; the first industrial laundry robot, for the folding of bath linen. In addition, innovations were presented by Inwatec, Denmark aimed at the automatic sorting of industrial workwear and there were in the RFID technology field or automated information processing and process control, the necessary new developments.

2 WOPCOM

The WOPCOM – World of PTC Community was launched at Expo Detergo International (October 19 - 22, 2018)! A new online platform where partners of professional textile care come together & find information on business development.

WOPCOM is a digital community platform and as such not a competitor to other information services, trade fairs, associations, trade magazines or consultants. They are all invited to use WOPCOM as the digital platform of the Professional Textile Care Industry worldwide.

The main benefits of WOPCOM are the following:

- WOPCOM provides neutral, objective and reliable PTC information of high quality – proofread by the WOPCOM Committee – provided by numerous professionals and organizations from within and outside the PTC industry.
- Connect with PTC professionals on an online platform accessible to any type of stakeholder. With a sub-



WOPCOM: online expert info 24/7

scription fee affordable to any successful manager in the world you will be part of a network of experts. You can discuss pressing issues and ask questions, WOPCOM will connect you to consultants and experts that provide answers.

- Easy accessible information through any device (Smartphone, tablet or desktop) with convenient navigation and filters, recommendations for further reading / watching and an account page to customize settings to your preference.

What results can you expect?

- Grow your network; via the WOPCOM network you can get in touch with all sorts of likeminded industry professionals. Both through online and offline channels.
- Share & learn; exchange actual experiences and issues with industry colleagues around certain forum topics. In discussion with other professionals on the platform you can easily get interesting views from others that aid you to further develop your ideas.
- Get answers to pressing issues by a Professional Q&A; WOPCOM has endorsed a number trainers and consultants on specific fields of expertise that can aid your business to grow!

- Gain a competitive advantage in your market! Generate new ideas for business development of your own company that result in competitive advantages! WOPCOM provides the following type of info to get you going:
 - Marketing articles (including country reports)
 - Technical articles
 - Scientific research papers
 - Analysis of business cases (including the Global Awards Candidates)
 - Expert visions from industry peers and stakeholders related to PTC
 - Conference presentations over the past years
 - Video recordings from workshops & webinars
 - An overview of consultants that can provide training and / or execute assignments to aid your business.
- Support your business strategies, sales pitches and decision making processes with references to (scientific) research, market studies, expert opinions and objectively analysed new technologies.
- Benchmark your business to others in the PTC industry. Are you applying technology and service concepts that fit best within your market? See how others perform in your (or comparable) markets and make sure you innovate to stay ahead of the competition!
- Make sure you don't miss out by keeping up to date on the latest industry developments and innovations! Constant content production and development of the WOPCOM platform will make sure you can rest assured and let the information come to you upon your request.
- Be invited for WOPCOM events, workshops and webinars; a couple of times per year the members of the community will be invited for networking events in real life where themes will be addressed that seem to be pressing within the community.
- Grow the total market size of PTC services, also in your own market! A bit noble to formulate it like this but by joining this community you will be part of something bigger. Your contributions aid to speed up the pace of innovation for PTC worldwide and as a group of industry representatives we will grow the market together!

Register now! www.cinet-online.com/WOPCOM

WOPCOM contact details:
email: wopcom@cinet-online.com

Phone: 0031 (0) 344 65 0430.



3 Innovations in Retail Textile Cleaning

3.1 New cleaning techniques

3.1.1 SafeChem

Safechem introduced the modified alcohol SENSENE, now 2 years ago at TexCare 2016 and has grown considerably during that time. From a start-up to a company with many customers all over the world with more than 300 machines that now run on this relatively new innovative solvent. On their stand you could read the stories of satisfied customers from various parts of the world.

Safechem also introduced a renewed perchlorethylene: DOWPER Pure Power. Dowper Pure Power is a special brand for a product with improved purity and quality for the dry cleaning industry with high quality requirements.



The Salad textile cleanser

3.1.2 Salad: Purely Natural and a fantastic result!

Salad is a liquid of unique botanical waters for the care of fur, leather and textiles. A new recipe and recovery technique from the knowledge of times past that contains only natural and safe components such as Siberian herbs, roots and flower extracts. A brand new cleaning system has been developed from this. Ecologically completely safe for customer and employees. Salad products are ideal for cleaning delicate leather, fur, wool and mixed clothing of any size and complexity. It gives a

natural freshness smell of clothing and is naturally environmentally friendly. Salad is easy to apply, because you only require a table, sink and dryer.

3.1.3 Results Solvetex VI, benchmark professional wetcleaning

Introduction

The aim of the project was to evaluate the performance of wet cleaning processes by setting a minimum of performance requirements to give an actual picture of the quality of the current wet cleaning technology. Quality aspects incorporated were stain removal, greying and dimensional change. Wet clean processes meeting the minimum requirements are rewarded with a statement of achievement by CINET. The statement of achievement is a proof to the market that the rewarded wet cleaning system meets with the quality standards of CINET for textile care processes for sensitive garments. The standards for the quality aspects, as defined by CINET, are as follows:

- For stain removal, the standard is that the sum of the stain removal in %, as defined in equation 1, for all non-watersoluble stains should be >100 and the sum of the stain removal in % for all watersoluble stains should be >125.
- The standard for greying is that the greying, as defined in equation 2, should be < 10 after 10 cleaning cycles.
- To pass the assessment of the visual appearance, all aspects should be assessed 1 or 2 after 3 cleaning cycles.
- The dimensional change of the garments should be 2% or less after 3 cleaning cycles. The dimensional change is measured after finishing.

Results

The performance of the processes of 6 suppliers were tested by an independent test institute and are presented here. All suppliers used wet cleaning processes and equipment representative for the day-to-day wet cleaning practice. All processes were modern dry-to-dry processes with processing times of 70 minutes and less. The results for stain removal are presented below in figure 1.

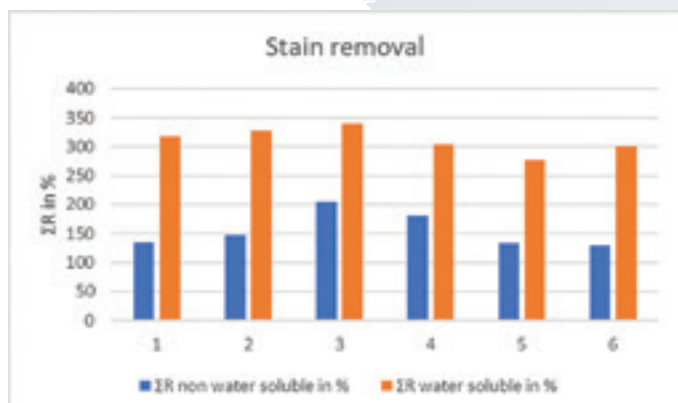


Figure 1) Results stain removal R.

The results for greying after 10 cycles are presented in figure 2.

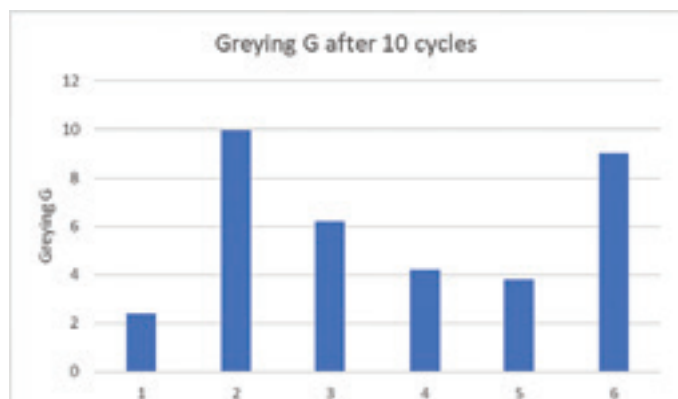


Figure 2) Results greying G after 10 cycles.

The results for the dimensional change of the garments after 3 cycles are presented in figure 3.

Test results & Conclusions

For none of the tested processes the appearance of the clothing after cleaning and finishing was assessed with a 3. So, concluding, the results for stain removal, greying and the visual appearance after cleaning met with the standards for the quality of wet cleaning as set by CINET. The dimensional change of the jackets, 100% wool and polyester/wool, also met with the standards as set for the quality of wet cleaning.

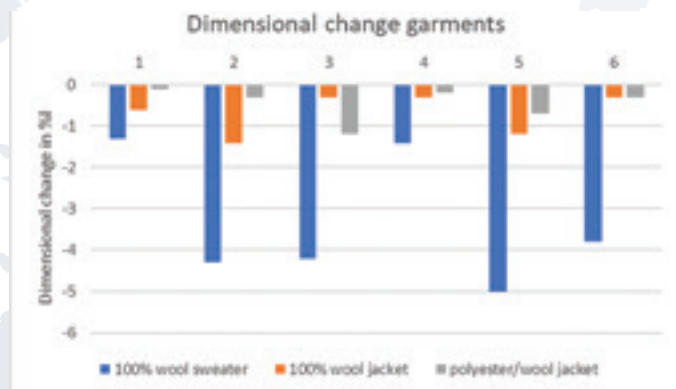


Figure 3) Results for the dimensional change of the garments after 3 cycles.

The dimensional change for the sweater showed somewhat larger values. This is probably due to the fact that, contrary to the practice in industry, the sensitive sweater was cleaned and dried together with the jackets and therefore the drying and cleaning procedure for jackets and sweaters together cannot be optimal for both and that the finishing process with applied pressure was set to be identical for all partners and could therefore not be adapted to the demands of the specific cleaning process. An optimal setting of the cleaning and drying process for the sweater together with an optimal setting for the finishing process of the sweater should be able to lead to improved results for the dimensional change of the sweater.

CINET is therefore pleased to announce that the cleaning processes of the following suppliers met the quality requirements for wet cleaning set by CINET:

- Alliance
- Büfa
- Cole & Wilson
- Electrolux
- Kreussler
- Seitz

CINET therefore awarded these suppliers the wet cleaning certificate that was handed over to the participants at the workshop of 21 October.

For more information, a complete rapport is available.

3.2 New machines and systems



The Böwe Black Forest Edition Multisolvent Machine.

3.2.1 Böwe

Böwe can now build on 70 years of experience in the dry cleaning machine market. After the takeover, already about 10 years ago by the Fam. Ziermann, a wide product program is being produced in Germany and China. The Black Forest Edition multisolvent machine, which was also presented on Clean 2017, stood prominently displayed. Böwe machines are exclusively equipped with Capacitive sensors. These sensors detect the filling level for distillation, drystat drying controller, the water separator and the sludge barrel. Where the goal is to measure the exact load of the machine and to prevent 'overdrying'. The most important innovation that was presented was the "Automatic Turbidity measurement". This sensor can detect how clean / pure the solvent is by means of light reflection. A laser shines through the liquid and a detector detects how much of it passes through. This enables you to set a certain percentage where you believe distillation is required. Otherwise, the solvent is pumped back through a filter, to the work tank. This ensures a more efficient use of your solvent, allowing you to save energy.

3.2.2 Electrolux

Electrolux presented the New Line 6000 machines. Research has been done on a way to remove the most physical burdens for employees. This "ease to use" principle means that the workload for employees is less,



The New Line 6000 machines of Electrolux

which improves productivity. In addition, a dryer was presented that you hardly notice when it is switched on. Because it has no extraction, it is also easier to move. All this is easy to follow on their app where you can keep track of everything from a distance. This app makes it possible to have a better understanding of usage, and to improve efficiency through the deployment of staff in the times when this is most needed. This makes it possible to wash more often with an optimal load. By using more maximally filled machines, you can save energy, water and manpower. Usability is the most important for this app.



The Gyro Balance System of LG for Laundry

3.2.3 LG

The LG stand had innovations for the washing machine. "Sell More, Service Less". More efficiency, more

convenience, and more intelligence in a washing machine with a few 'Core Benefits'. Such as: An LG Inverter Direct Drive Motor™. This engine is not driven by a belt, which means better reliability and durability. It also has a Gyro Balance System (GBS), which gives optimal performance through an advanced algorithm. Thereby a better stability and thus less energy loss because of the vibrations of the whole machine. It also has the ability to clean the machine from the inside with a push of the button. And it can connect to your phone or computer to keep you up to date about the status.



The washer and dryer combination from Yamamoto

3.2.4 Yamamoto

Yamamoto was at the Expo Detergo with a washer / dryer combination. It is a fully automatic system that offers the wet-cleaning industry a dry to dry option. It would be suitable for many textiles: Wool, Kashmir, Silk, Rayon, Leather and Linen. This combination saves on m2 space, labour, time and maintenance while maximizing efficiency.

3.2.5 Metalprogetti

Metalprogetti is a leading Italian company in the design and manufacture of automated systems for moving and handling both hanging and folded garments, as well as a wide range of other light items. The Batch conveyor belt has been developed to automatically manage orders



The transport system from Metalprogetti

that come from automatic packing systems and organize them in defined groups, for example via routes and drop zones.

3.3 Finishing equipment



VEIT launches a new cuff clamp

3.3.1 VEIT

VEIT GmbH is the manufacturer and expert for ironing and pressing of garments. At the Exhibition Expo Detergo in Milan, VEIT presented the latest 2019 version of Shirt Finisher SF 26.

Visitors at the VEIT booth were convinced with the performance of the new model shirt finisher. VEIT showed finishing of only white and blue shirts. The result was awesome!

The optional moisture control unit shortens cycle times and saves energy. The unit is unique on the market. During the drying process, it permanently measures the residual moisture in the shirt and the shirt's dryness in the front placket. As soon as the shirt is dry, it automatically switches off the blowing. No operator intervention is required for exact and fast drying of the shirt. With this VEIT control an energy-consuming heated front clamp is redundant.



Sankosha: The SW-100 Stationary Washer

3.3.2 Sankosha

Sankosha presented a very interesting and innovative new technique for woolen and extremely delicate garments. The mechanical action part of the washing cycle is removed in the SW-100 Stationary Washer, by using a spray and vacuum combined nozzle. The delicate clothing is laid down on a soft surface of the machine and held in place with a net. This also ensures that no

loose buds or glitters are sucked through the vacuum mouth. This prevents shrinkage and the shape of the garment will not change. This technique can be used on any textile and all coloured articles.

There was also a Stationary Dryer. This model has an open front in which garments can be hung up to dry through the circulating hot air.



shirt finished

3.3.3 Pony

Pony displayed many shirt-finishing machines at their stand, such as the Eagle, Angel, Kite and DB360 where 2 shirts can be finished at the same time. Kite is the entry-level of PONY professional shirt finisher's range with the following main features: hot air recovery system - pneumatic side tensioning device - photocell for shirt height reading - pivoting front paddle with pneumatic closure - automatic height adjustment of the sleeve's height with micro manual adjustment and contoured sleeve locking device - adjustable pneumatic sleeve tensioning by a dedicated key on touch screen - new compact collar clamp to ease all garment movements. They also have a trouser press where both the pipes can be pressed at the same time. This ensures a faster finish and ease of use. The Kite is available either in steam heated version or in all electric version, it can be paired with SMART, the PONY vertical collar and cuff press, to create a very compact, highly productive and energy-saving shirt finishing station.

4 Innovations in Industrial Textile Service

4.1 New machines for Textile Service



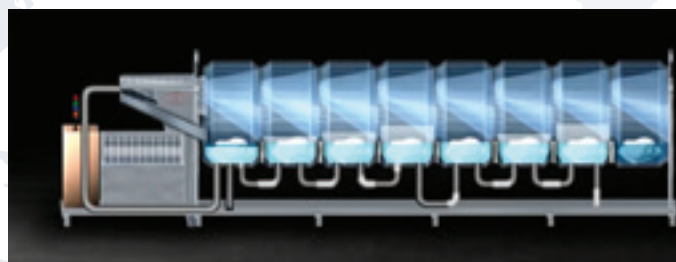
The Servotronic of Kannegiesser

4.1.1 Kannegiesser

Kannegiesser showed the large tunnel "Vario", a tunnel washer that can handle a large variety of batches at the same time. The new PowerTrans Vario is the workhorse for any laundry. A modern batch washer, which combines flexibility, performance and lowest consumption figures. Since all compartments are separated, there is no need to leave buffers between different colours, which is beneficial for productivity. Various folding machines were also presented. These were equipped with automatic feeders, the servotronic, which alleviated the work for the employees. Thanks to the suspension system, a buffer could be created during the work for the folding machine, so that even if the operator is away for a short while, the production can still continue. In addition, there was also a speed feeder who was already prepared to also be connected to an autofeed system, should this be necessary.

4.1.2 Milnor

The American company Pellerin Milnor was present with a big stand also this year at the Expo Detergo in Milan. This year, the main attraction, was their innovative Pulseflow technology, which was displayed extensively. This technology combines the counter flow principle with a standing bath. This has created a unique combination that has good characteristics of both methods. Textile batches are loaded into the tunnel using rapid water



The Pulseflow technology from Milnor

injection thanks to the RecircONE® pump system that continuously recycles water through the first module. The batches are moistened when they slide into module 1, reducing water consumption and total process times, while using chemistry more efficiently. During a cycle you have the standing bath principle in which the batch moves back and forth in a compartment without exchanging water with the compartments next to it. Then a 'Pulse' is flushed through the washer just before the transfer, through clean water which is pumped into the tunnel from the last compartment. A connection is then made between the compartments, in order for all the water to be 'pushed' 1 compartment towards the front. The water from the first compartment is led to the sewer. As a result, every batch of textiles comes across cleaner water.



Girbau customer solutions

4.1.3 Girbau

At the Expo Detergo, Girbau presented a new stand concept:

"Fairs should stop being just a shop window for machinery. Customers want solutions, not machines. So we were inspired by the ancient Greek agora (forum) to shape our presence at Expodetergo 2018: a place to exchange knowledge, to achieve better laundry solutions for our customers together, through innovation," declares Jordi Bosch, International Sales Director.

The stand had different corners and themed areas with specialist solutions (wet cleaning, hotel, self-service, etc.), demonstrations of "Sapphire" enabling laundry owners to monitor and control operating alarms and performance indicators for each machine and laundry, as well as multimedia interactive zones. In the centre, visitors could consult the technical and sales team about the right solution to fit their project, or consult the Girbau Laundry Expert about workflow issues to get the most out of their laundries.

"We want to take to Milan the spirit of the Girbau Experience Center we've opened at our headquarters in Barcelona. Therefore, expressing innovation as the driver of change in laundries through direct, personal interaction with customers," adds Bosch.

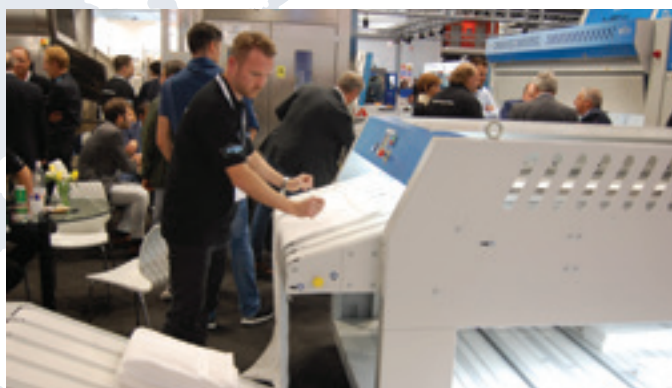
In terms of equipment, the main novelties that were presented in Milan:

- Industrial laundry: TBS50 batch washer, COMPACT+, ST2700 dryer, DRBS feeder and FR+ sheet folder.
- OPL: HS6028, HS6032 and HS6085 washing machines, ED1250 and ED900 dryers.
- Wet cleaning: Aquatouch® and Allwet® solutions.
- Self-service: MOBILE Laundry (plug&play container for installation in shopping centres).

4.1.4 Vega / Fintec

VEGA systems Group is a Dutch company that specializes in the design, development, production and implementation of industrial washing equipment. Two new devices were exhibited in Milan: The VarioLoad and the VarioFold.

VEGA - FINTEC VarioLoad (for preparing and pushing the garments on transport hangers) allows users of various body sizes to hang up to 400 garments per hour, safely and conveniently.



The Vega / Fintec VarioFold

Automation of the classic work done manually in textile service companies is a crucial factor for increasing productivity. The VEGA - FINTEC VarioFold TR series is a further commitment to develop concepts for improving energy efficiency in washing all types of clothing.

VEGA - FINTEC VarioFold TR handles all the time-consuming operations of folding, sorting and stacking dry washing in various formats (beach towels, sauna towels, towels, woolen blankets, diapers, laundry bags and other small flat garments).



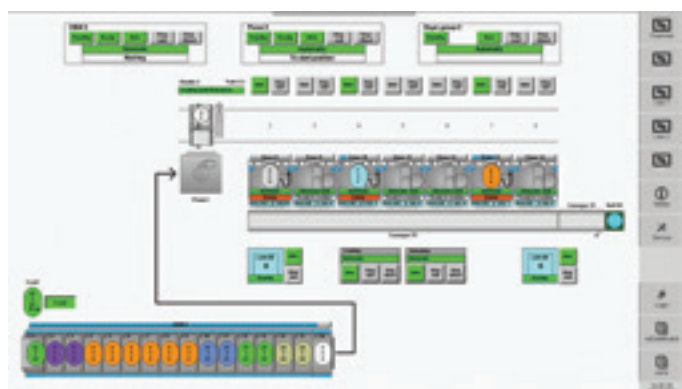
Lapauw Iron Max Gas

4.1.5 Lapauw

With Expo Detergo 18 Lapauw can look back on a successful exhibition participation! With the acquisition

of Transferon, in 2017, Lapauw took up tunnel systems in its product range. A partnership with Italian manufacturer of logistics systems, Montanari, completes the offer and makes Lapauw a total provider of laundry solutions.

In addition to the washing tunnel, visitors could also see the latest innovations in the field of ironing flat goods for large and small volumes with the IronMAX gas and steam and the IronPRO.



The laundry system of Lavatec

4.1.6 Lavatec

Lavatec has invested heavily in data acquisition and data analysis with its osLaundry concept. In recent years, a lot of time, energy and money have been invested in software development.

Each machine has a touch panel with the main modules that suit their specific function. In addition, a module called osAir is developed to collect data from the main modules. All data generated by the machines is freely available to the customer.

This means that, in addition to the available reporting tools osReport, osAlarm and osDashboard, the customer can also choose to present the data on existing systems.

Naturally, this information is also available on mobile devices. You can then connect securely to osConnect



The Cyclone filter from Tolkar

4.1.7 Tolkar

Tolkar presented new innovations to their Smartex washing machines. For example, a unique filter was placed on their machine that could filter out the sand by means of a cyclone operation before it was circulated back again. Their washing machine is designed in such a way, that the percentage of water that is outside the drum (and is therefore not used efficiently) is minimized by pumping it away as quickly as possible and reinjecting it into the drum. With this technique, it should be possible to save up to 50% water, according to Tolkar.

4.2 New cleaning techniques

4.2.1 Christeyns

A problem of on-premise laundry (OPL) is the low efficiency and productivity of the washing process. Christeyns is now introducing a new washing concept Speed-O, which should solve this problem. Speed-O is a time-saving



Christeyns stand

laundry concept for washing light to medium soiled textiles in washing machines up to 70 kg. Speed-O is a synergistic combination of new, cold-active washing chemicals, ozone and a special cold washing process. It introduces low concentrations of ozone in the washing machine while it is running. Their chemicals are specifically made to function at low or even cold temperatures up to 20 °C. This saves time, since no warm-up is required. Speed-O increases the efficiency and productivity of your own laundry. It saves costs for energy, water and personnel. The laundry is hygienically clean, fluffy soft and has good whiteness. Shorter washing cycles and lower washing temperatures also prolong the life of the textile.



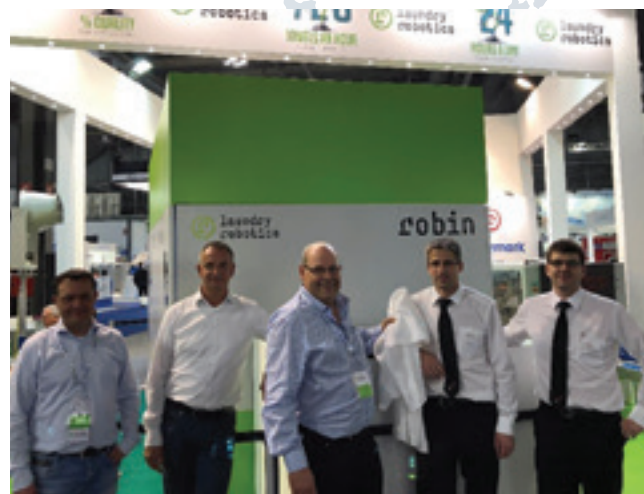
The Ecolab team

4.2.2 Ecolab

Ecolab looks back on a successful exhibition in Milan. With the theme Thinking Ahead, an international team of experts has presented the latest developments within

Ecolab's Textile Care division. In addition to the sustainable low-temperature processes for hospitality, corporate clothing and healthcare, there was also a lot of attention for Ecolab's water & energy solutions. With the increasing energy costs there is a lot of demand in this area. Ecolab's vision on digital transformation was shared with many interested parties. The availability of data from the washing processes, which can be linked to other available data, offer new opportunities for productivity improvement and integral cost savings. The enVision Process Intelligence platform already provides for this. In the near future, Ecolab expects to be able to take further steps in the process from descriptive to predictive analyses through its partnership with Microsoft. At the stand were represented (v.l.n.r.) Bennie Douma, Reindert Baars, Bert Bakker and Carlo Krijnen.

4.3 Automation



The latest innovation from Laundry Robotics: robin!

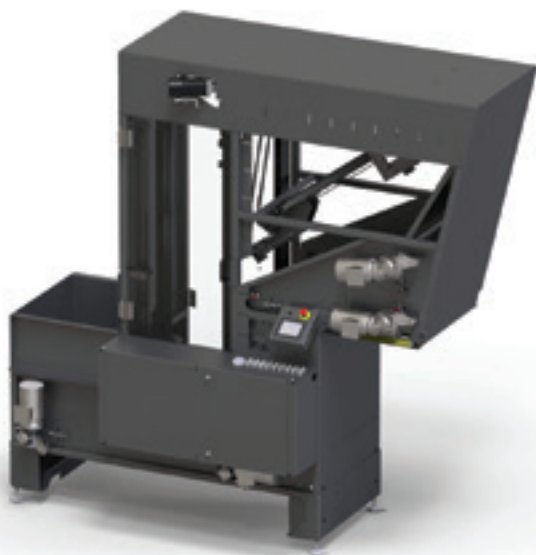
4.3.1 Laundry Robotics

The most important innovation came from Laundry Robotics. robin picks up towels and provides every terry folding machine (regardless of type and brand) of 720 towels per hour. He works 24 hours a day, 365

days a year, offers 100% consistent and reliable output, as well as high quality and productivity without downtime. Robin uses Deep learning software developed by Laundry Robotics especially for use in industrial laundries.

Laundry Robotics is a start-up of three partners that focuses on the design, development and creation of robot solutions for human challenges in the industrial laundry sector. Accuracy, efficiency and high productivity are central to this. After all, finding ways to work faster, smarter and cheaper is essential in order to be able to meet the rapidly changing market demand in the future.

clothes are empty. It then also has the possibility to sort the textiles into 9 different categories in order to select the correct washing process. This can make a difference in manpower when sorting the laundry on the dirty side. An example was given of a laundry in Sweden that went for the sorting of dirty laundry from 6-10 people to 3 or 4!



De FRIGG 1500 van Inwatec

4.3.2 Inwatec

At Inwatec a machine was shown that can sort dirty laundry using a robotic arm by means of an advanced 3-D camera. The 3D camera software takes the best grip on the garments. This ensures good separation of textiles and high efficiency. Then with a subsequent device with X-ray checked whether all pockets of the



WinWash 2.0

4.3.3 WSP

Exactly one month after the successful anniversary # Up2U, WSP Systems is also present on ExpoDetergo. Since they launched WinWash 2.0, the completely re-developed control software for the laundry. The familiar WinWash, which operates in more than 200 laundries worldwide, has added a number of new functionalities such as the simulation mode. In addition, the interface has been completely redesigned and much attention has been given to user-friendliness.

Prominent this year is also the focus on Laundry Dashboard, the performance improvement software that increases the productivity of the laundry. This software has also been completely redeveloped, making it even easier to increase the productivity of the laundry.

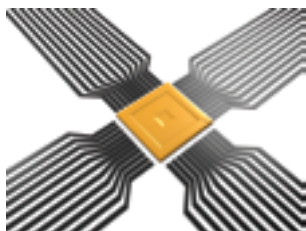
4.4 RFID

4.4.1 Datamars

Datamars has shown several new products in the RFID market. Like Cloudburst, a software layer for the UHF readers. This will reduce the complexity of implementing RFID technology, while maximizing the performance of the reader. In addition, a UHF laundry chip TM (401) was shown. This chip has the smallest dimensions, and can therefore be placed in the narrowest hems. The comfort of carrying this chip is also improved by its unobtrusive look. Various reading systems were also shown. For example, the UHF Open Tunnel can be conveniently placed on any conveyor belt, and because of the open structure it does not interfere with the flow. The software can also automatically filter out incorrect readings of textiles that are close to the tunnel. Finally, there was also a UHF Portal+. On the clean side, it can scan entire karts at the same time with up to 500 pieces of textile at the same time at a normal running speed.

4.4.2 Thermotex

THERMOTEX is a supplier of high quality products for professional textile marking and finishing. For more than 30 years, they have offered professional machines, supplies and services for textile marking. At Expo Detergo they displayed the various UHF technology at their disposal.



Due to their long range, the UHF transponders are particularly suitable for container and bulk logging as well as for coverage of a room or area. The transponders are made of tried and tested materials and can be heat sealed or sewn in. They are available in various sizes and variants and are suitable for standard or wet washing.



The UHF RFID chips from USTEK

The UHF Box is available in one or two door pairs, or optionally with an automatic door operation system. Your chipped textiles are efficiently logged and read error-free. More than 500 items can be scanned in under 4 seconds. The doors lock during the scanning process. They can be opened again as soon as all textiles have been logged.

4.4.3 USTEK

USTEK is a UHF RFID company which is the only one that offers a comprehensive solution for a 100% UHF RFID laundry. There are different types of tags. Also suitable for the food industry and for the clean-room. For laundries there were tags approved for 200 washing cycles with a pressure of 70 bar for the extraction. These can also be ironed without problems or used in dry cleaning. Apart from their UHF tags, reading terminals and hand scanners were demonstrated as well.



RFID-technologie

The background of the entire page features a stylized world map in shades of blue. Overlaid on the map are several glowing white lines that represent global connections or data paths, with bright points of light at their intersections. In the top left corner, there is a small blue square and a white square, each with a thin black border.

CINET

Professional Textile Care

Power of partnership

P.O. Box 10, NL - 4060 GA Ophemert

Phone: +31 344 65 04 30 Fax: +31 344 65 26 65

e-mail: cinet@cinet-online.com www.cinet-online.com